

Applied figures

video clips of Dicephalic, Dithoracic, Abdominopagus, Ischio-omphalopagus Tetrabrachius Tetrascelus (lamb) and (Amelia) brachiomelic goat showing pattern of ambulation



Figure 1 A & B Left anterolateral view of brachiomelia goat showing absence of left forelimb and right forelimb medially rotated. (B) Closed up left medial view photograph of left forelimb showing the remnant location of the vestigial limb

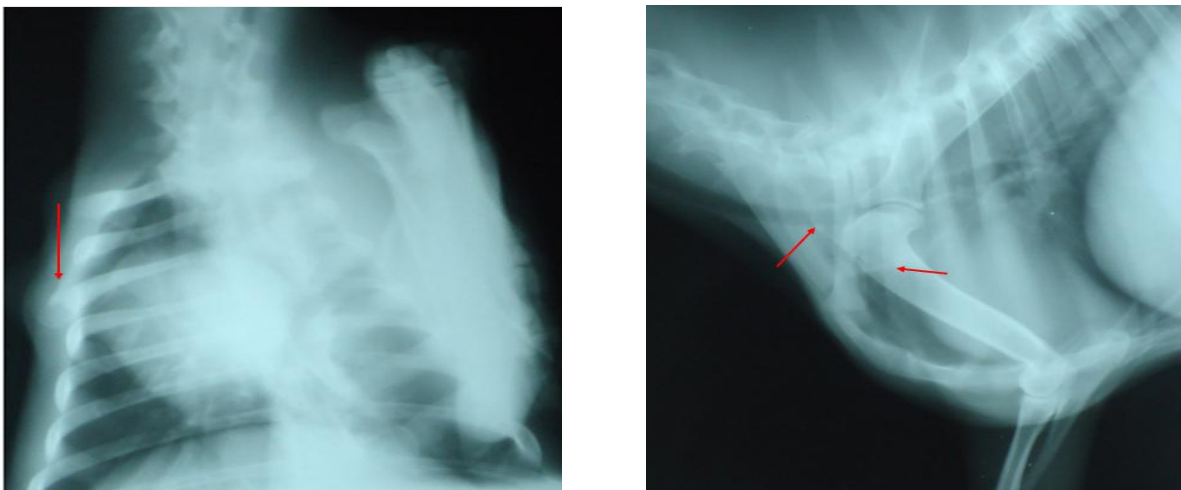


Figure 2A & B Radiograph of left forelimb (dorso-ventral view) showing remnant bony structure of limb. (b) Radiograph of left forelimb (left lateral view) with arrows showing outline of rudimentary bony appendicular structure.



Figure 3A & B Case of Omphalo-Ischiopagus (Dicephalic Dithoracic Abdominopagus Tetrascelus Tetrabrachius) in Lambs, Radiograph of conjoined twins showing two spines (black arrows), four sets of limbs (red arrows) and Barium meal in the GIT (white)

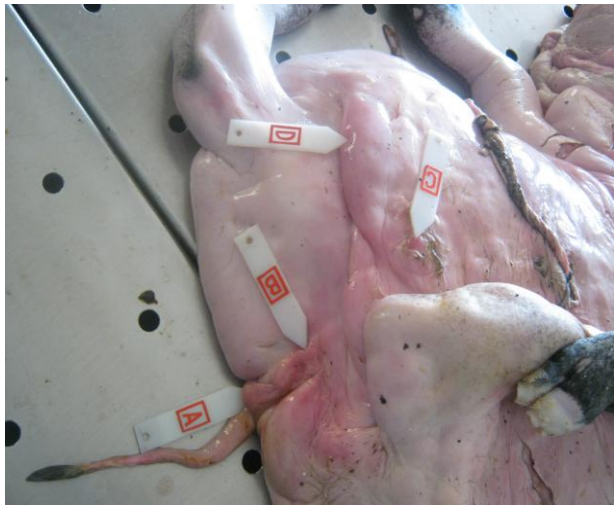
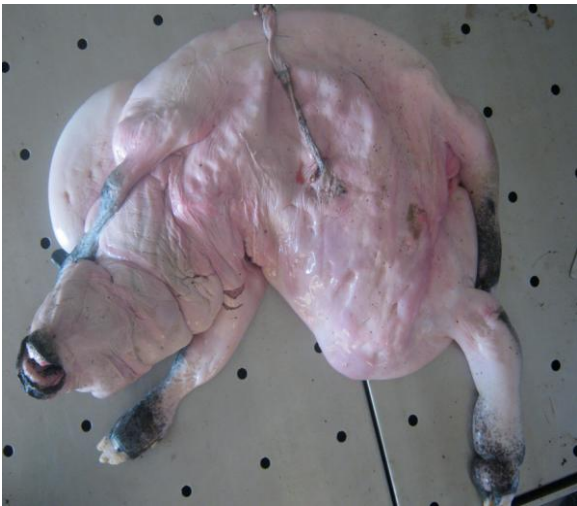


Figure 4 A & B Gross morphology of the anasarca calf with non-pigmented skin and brachiomelia of the left fore arm A -Partially differentiated anal opening, B- Partially differentiated gonadal ridge, C- Imperforate preputial opening, D- Attenuated scrotal sac

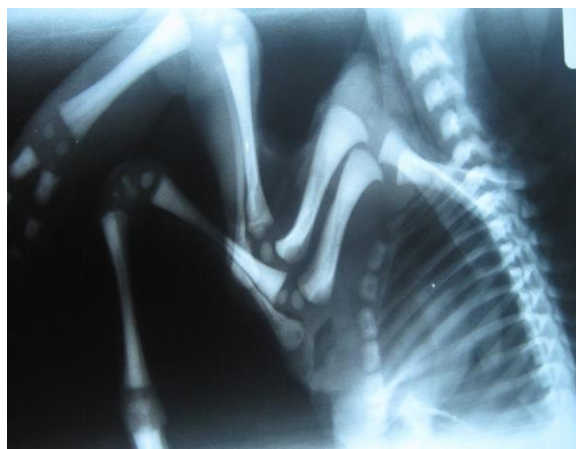
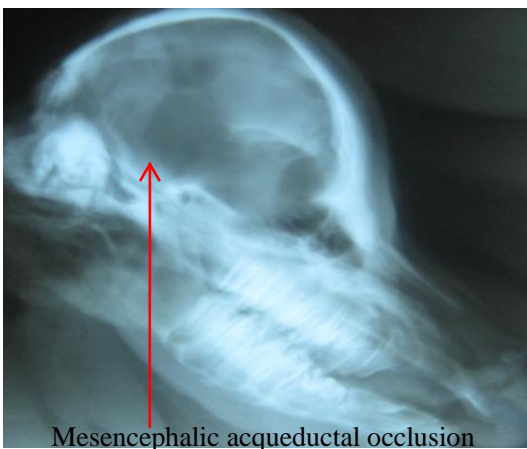


Figure 5A & B Radiograph of head of anasarca calf showing the generalized edema of the head